



**SMSBOX.BE**  
mobile solutions

©2013 - A division of **JAAN**  
internet solutions

## SMSBOX.BE - MANUAL OUTLOOK PLUGIN

### Index:

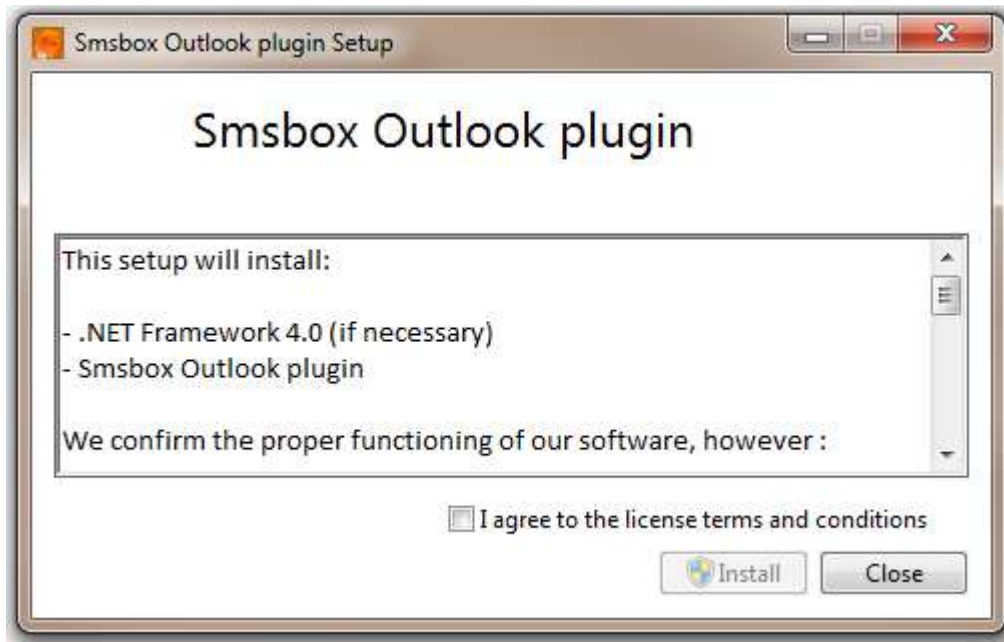
1. Download the application.....	3
2. Installation.....	3
3. Starting for the first time.....	4
3.1. Sending a message.....	6
3.2. Fixed messages.....	8
4. View logs.....	8
5. Check for updates and get support.....	9

### 1. Download the application

You can download the **Smsbox Outlook plugin** software at [http://www.smsbox.be/download/plugin\\_current.zip](http://www.smsbox.be/download/plugin_current.zip)

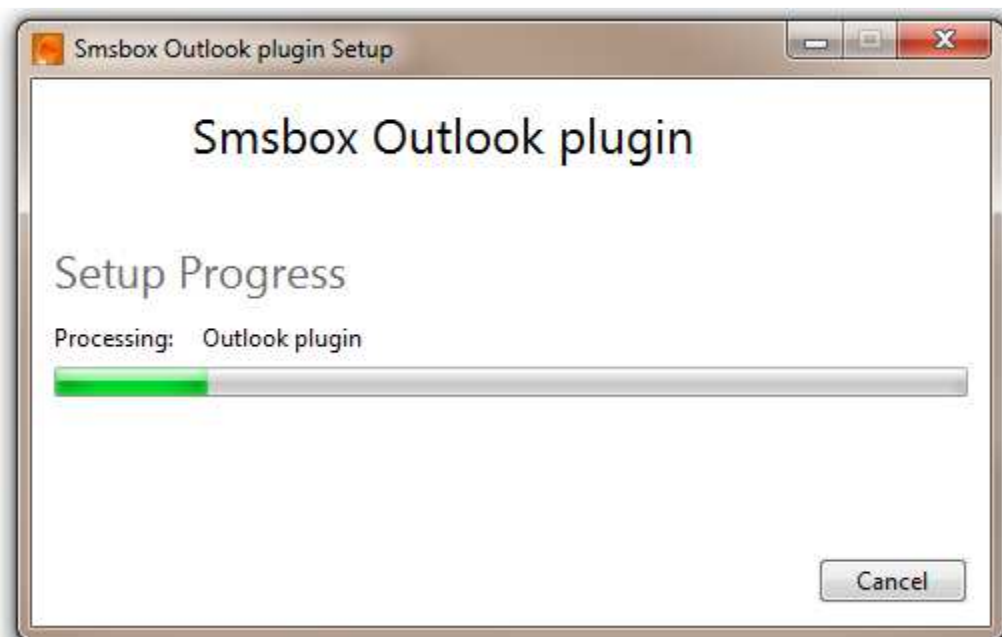
Unzip this file into any folder at your pc, and **open setuppluginXXX.exe**

### 2. Installation

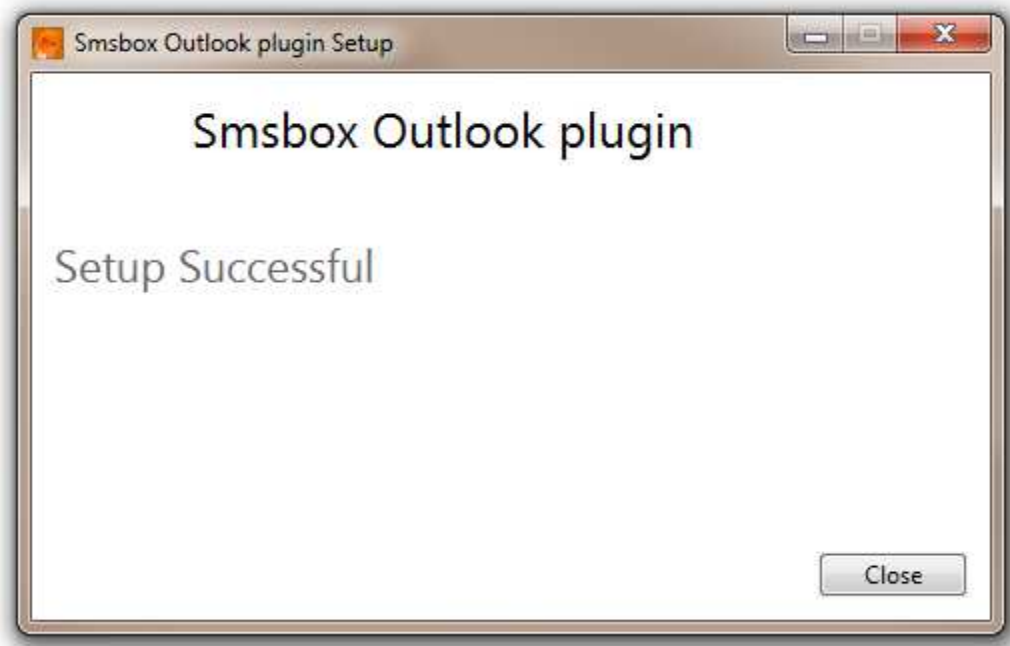


The Outlook plugin uses **.NET Framework 4.0**, this will automatically be installed if necessary.

Click on agree, and install. After the installation of .NET Framework 4.0, the **Outlook plugin Setup** will be installed.

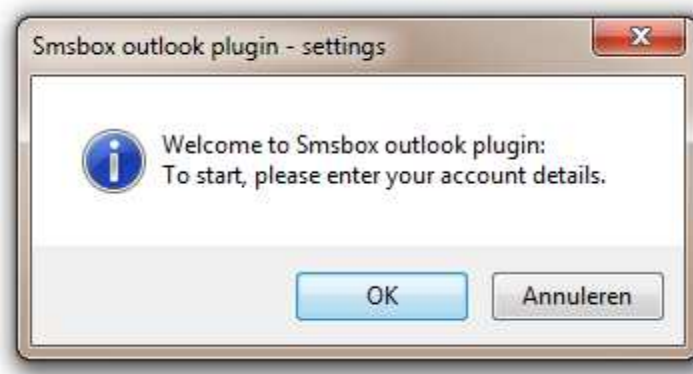


The **Outlook plugin** will be installed at: **Program Files\Smsbox\op\**.



The software is now installed and ready to launch through your **OUTLOOK** for the first time.

### 3. Starting for the first time



You will see a welcome dialog and asking for **your account details**.

The screenshot shows the 'Smsbox outlook plugin - Main' window. At the top, there are menu items: 'Create SMS', 'Messages', 'Settings', and 'Extra'. Below the menu is the 'SMSBOX.BE' logo with the tagline 'webbased mobile solutions'. The main configuration area includes:

- Credit(s): [text input]
- Countrycode: [text input with value '32']
- Username: [text input]
- Password: [text input]
- E-mail: [dropdown menu with '@jaan.be' selected]
- SenderID: [text input with value 'smsbox.be']
- Delivery notification:
- Are you behind a proxy?:
- 2-Way:
- SSL:
- Send bug report(s) automatically:

At the bottom right, there is a 'Save config' button with a floppy disk icon.

Enter your given **username and password** and select an **email-box**.

If you don't have an account, please go to our site [www.smsbox.be/cp/register.php](http://www.smsbox.be/cp/register.php)

SenderID is your originator and standard **smsbox.be**, but you can change it to your own preference.

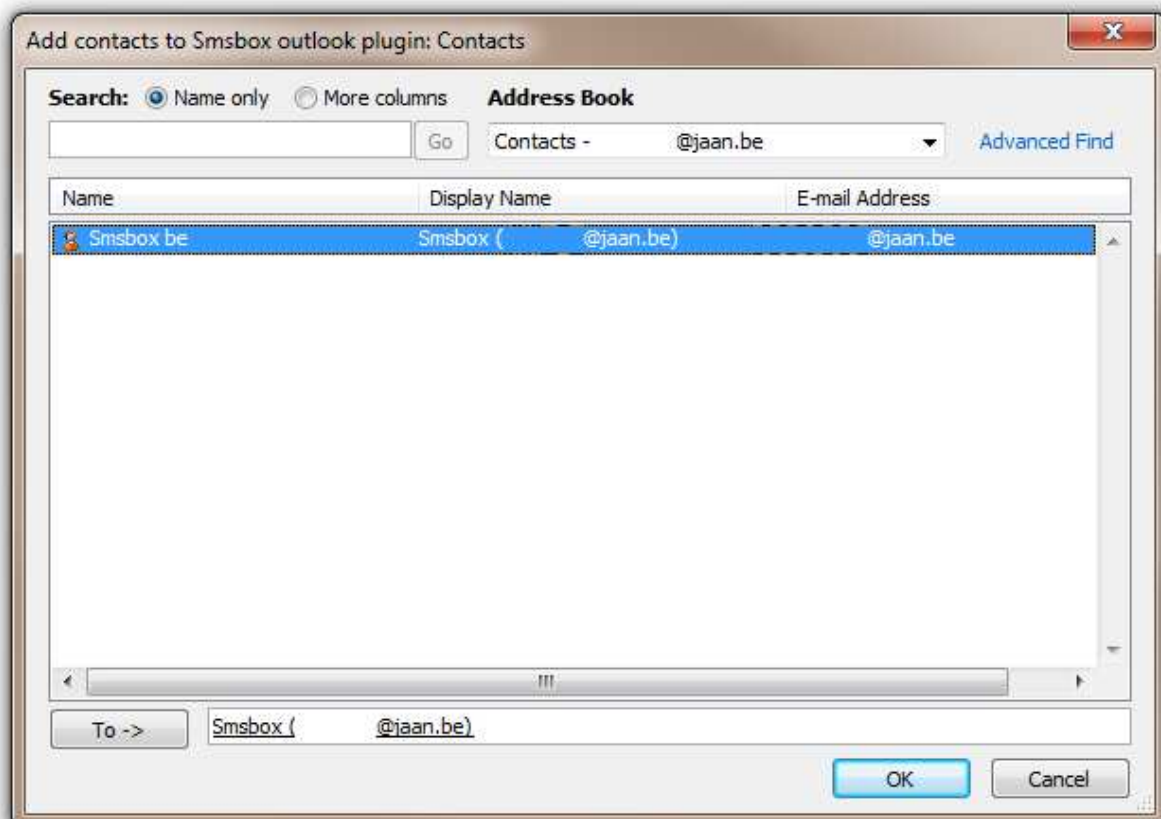
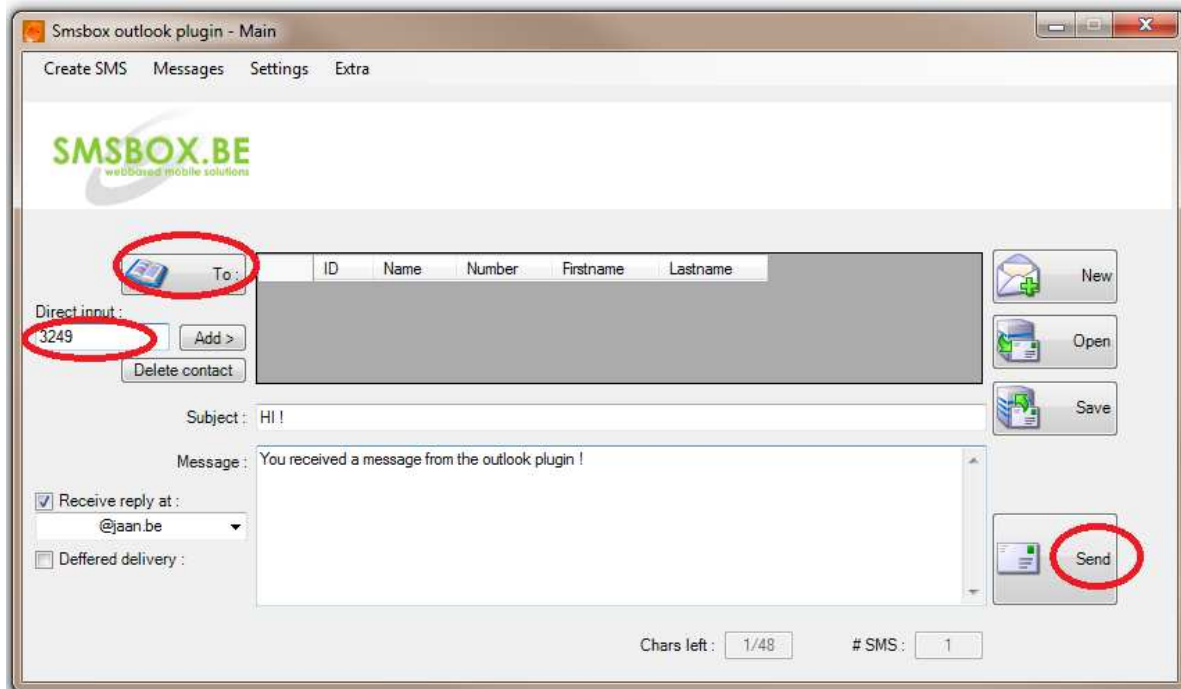
If **2-Way** is enabled, your **replied messages** will be send to your mail-box.

If you are **behind a proxy**, you have to enable this option, otherwise **Outlook plugin** might not work properly.

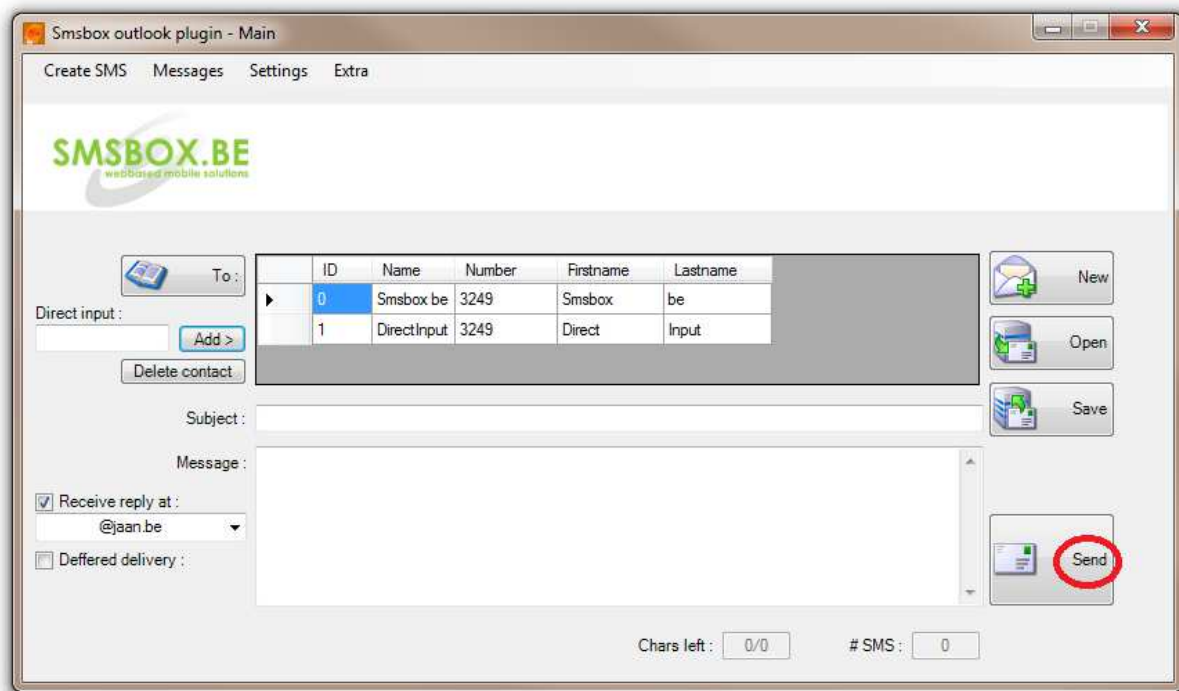
When settings are done, you can click the **save config button**.

### 3.1. Sending a message

If you want to send a message to a contact, you can choose between a **direct input** (for ex. 32498765432), or choose a contact from your **Outlook address book** (To-button).



**Be aware !** You can only send message from you Outlook address book if you have specified a mobile-phonenummer to that contact.



You are now ready to **send your message**.

If your contact replies to your message, **you will a reply email:**

### Re: Sms

Smsbox.be <+3249 @addin.smsbox.be>

Sent: do 3/10/2013 12:38

To:  @jaan.be

Subject: Re: Sms

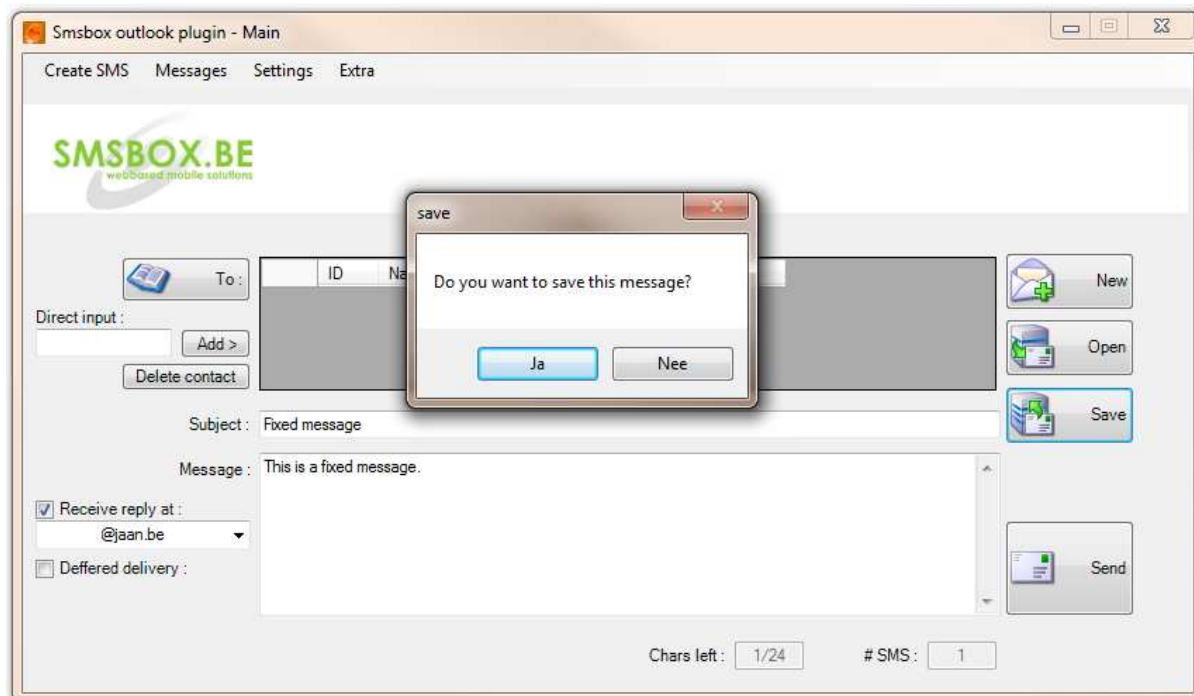
From: Direct Input <+3249 >

Message: Hi there, I've got your message !

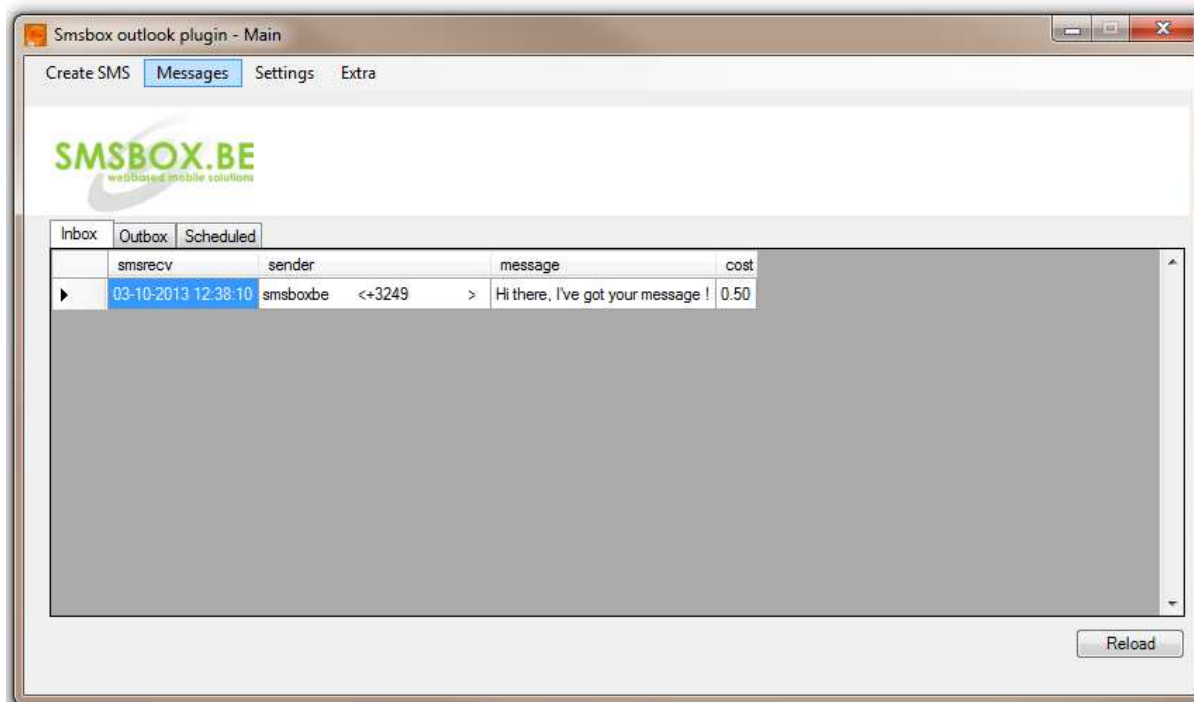
### 3.2. Fixed messages

You can save your message as a **fixed message** to use later.

These fixed message, are also saved to your **web-based account** !



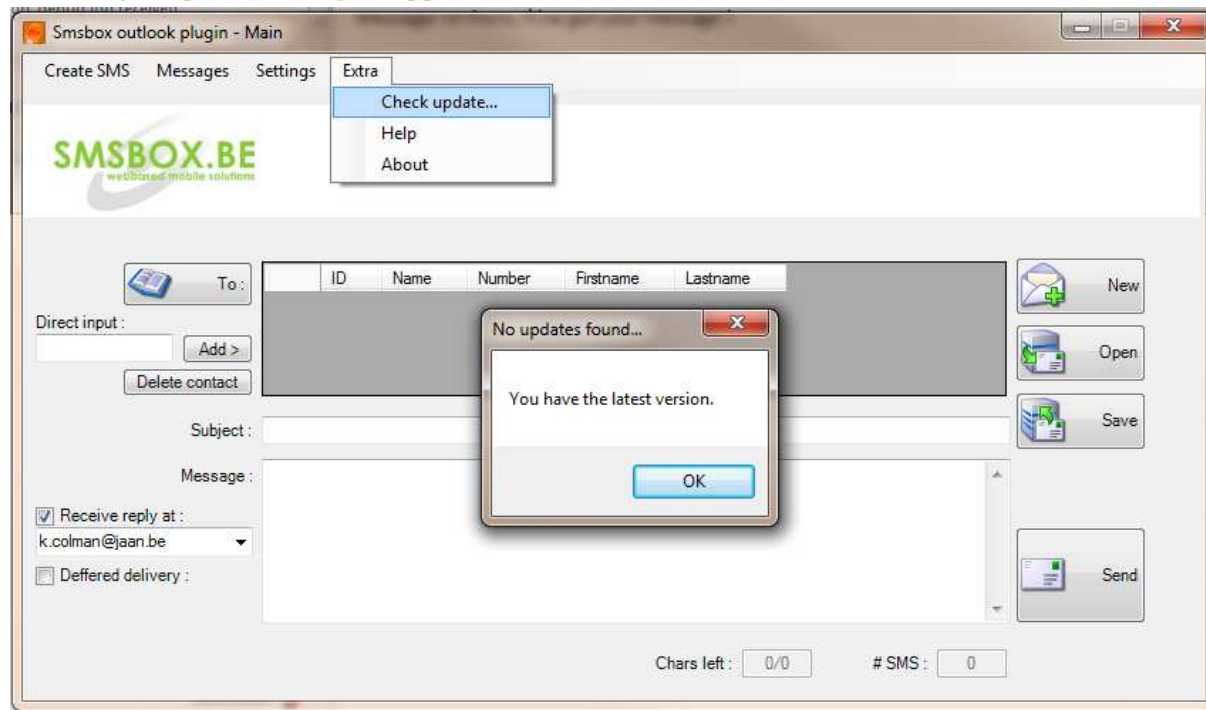
### 4. View logs



In your **messages logs** you can find all your messages. Separated by **Inbox**, **Outbox** and **Scheduled**.



### 5. Check for updates and get support



The **outlook plugin** will automatically look for updates at the **start of your Outlook** or you can check for it manually, you can do this in the **Extra menu**.

If you have found a bug, don't hesitate to contact [support@smsbox.be](mailto:support@smsbox.be) or send us your **bug report files** (see Help menu).